

How to write a construction daily report that keeps your project on track

[Article originally appeared in www.fieldwire.com]

By Josh Keenzel

The GC just asked for documentation on a delay that started three weeks ago. Your superintendent knows it happened, but the construction daily report for that week says, “Work continued as planned.”

Either the report wasn’t written when the delay was actually happening, or it was written without the detail needed to capture it. Either way, the one record that should have protected you is now working against you.

This article walks you through exactly how to write a construction daily report that holds up when it matters — what to include, when to write it, and what to avoid along the way.

What this article covers

- A construction daily report is your project’s most reliable record; it captures all the important details from the jobsite.
- Most construction daily reports don’t serve their intended purpose due to vague entries, delayed writing, and scattered documentation.
- Reports reconstructed days later lose credibility, and information split across texts, emails, and spreadsheets leaves gaps when you need the full story.

- Field-first tools make consistent reporting realistic — Fieldwire lets crews build reports on their phones throughout the day, with structured fields, auto-generated weather, and automatic photo metadata stamps.

What is a construction daily report?

A construction daily report is the written record of everything that happened on your jobsite in a single day. Think of the daily report as a snapshot capturing who was on site, what work was done, what equipment was running or sitting idle, what materials were delivered, and what went wrong.

At a minimum, the report would include the date, the author’s name and title, start and stop times, weather conditions and their impact, personnel on site, the current state of the schedule versus plan, and anything out of the ordinary affecting the project.

Who uses construction daily reports, and when they matter most

Every role on a project touches daily reports differently:

- Superintendents and foremen write them.
- Project managers and project engineers review them.
- Operations leaders use them to track performance across jobsites.

■ Continued on page 4



Image credit by www.doforms.com

Big box tinderboxes: Warehouses are exposing more Californians to costly, toxic disasters

[Article originally appeared in <https://calmatters.org>]

By Susan Phillips, CalMatters

Automation, exploitation and the sheer size of today’s warehouses are magnifying fire risk. A half-dozen recent warehouse fires demonstrate that warehouse fires can no longer be considered a bug in the system. They are a feature.

A 2025 analysis by the insurance company Zurich describes how “too dense, too tall” storage trends have increased warehouse fire hazards. Imagine 1 million square feet under one roof, piled high with TVs, kayaks, electronics, batteries, hand sanitizer, vapes, toys, clothing, suitcases, all nested together, wrapped in plastic, and stored on pallets floor to ceiling.

When a mega-warehouse burns, it’s like a whole neighborhood going up in flames.

Mega-warehouses larger than 1 million square feet are popular in part because they make the transition to automation more cost-effective. Automation facilitates top-to-bottom stacking

in addition to minimizing the need for human workers. Increased fuel density, larger areas to cover, more complex electrical systems and fewer eyes on the floor have made warehouses a recipe for incendiary disaster.

Big box conflagrations require multi-agency collaboration, hundreds of firefighters and days or weeks before containment. Just look at the cold-storage warehouse fire in Boyle Heights this past week, which choked the air across Los Angeles. Fires can cause supply chain issues, financial losses in the millions, plumes of acrid smoke, soil and water contamination, and massive piles of toxic debris.

A 2020 fire in Redlands leveled a concrete tilt-up the size of a city block and took a week to extinguish. That fire blanketed nearby neighborhoods with smoke, ash and noxious fumes, creating the equivalent of two football fields of debris.

Post-fire clean up resulted in a backroom deal to dump thousands of truckloads of rubble next to the San Bernardino neighborhood of Verdmont, where high winds dispersed concrete dust and

dislodged pebbles that pelted windows, people, cars and pets.

This lasted for years until the rubble was removed using thousands of truck trips.

In December 2021, a three-alarm fire at the Carson Industrial Center was fueled by pallets of beauty products. Toxins entering the Dominguez Channel created a malodorous, organic die-off that cause headaches, sore throats, burning eyes and nausea for months.

After logging over 4,700 odor complaints, the region’s air quality regulator issued five citations to the warehouse’s complex chain of actors, including cosmetics brands, wholesalers and Prologis, one of the largest warehouse companies in the world.

At the Kimberly-Clark warehouse in Ontario in April, a viral video showed an employee allegedly igniting some of the warehouse’s 1 billion rolls of toilet paper, saying, “All you had to do was pay us enough to live.” Warehouse fires include higher rates of arson on the part of ex-

ploited employees, who may set blazes, tamper with electrical systems and disable mandatory sprinkler systems.

As an industry, warehouse work is dependent on temp labor models with low wages, hostility toward collective bargaining, rapid employee turnover and high rates of worker disability.

In recent days, the Lineage cold-storage warehouse in Boyle Heights burned for more than a week as the associated parties shifted responsibility. Global cold storage food distributor Lineage Logistics leases the building from Chill Build, LLC, which is a joint venture of Barber Partners and Bain Capital. Lineage in turn leases the roof to Los Palos Street Operating, LLC, which is a division of Altus Power, whose solar equipment may have malfunctioned during maintenance.

■ Continued on page 4



CALIFORNIA SUB-BID REQUEST ADS



HANFORD APPLIED RESTORATION & CONSERVATION
California Contractors License No. 461167
775 Baywood Drive, Suite 207, Petaluma, CA 94954
(O) 707.996.6633 • (F) 707.996.6641

**SEEKING CERTIFIED & QUALIFIED SBE TRUCKERS/SUBCONTRACTORS/SUPPLIERS
PERFORMING A COMMERCIALY USEFUL FUNCTION**

Project: C0717 - Upper Berryessa Creek Off-Site Mitigation Project
Project No. 26174041 Invitation No. VW0684

Scope of work: Provide mitigation to construction impacts for the Berryessa Creek Flood Risk Management Project. Planting Type TB2 container stock units, planting Type TB4 container stock units, planting plug units, installing live stake cuttings, hydroseeding 16.72 acres, installation of an irrigation system, 5-year plant establishment period.

Location: Milpitas, CA
Owner: Santa Clara Valley Water District
Engineer's estimate: \$2.5 million to \$3.5 million

Bid Date & Time: July 8, 2026 @ 2:00 PM

Hanford is requesting the following trades including but not limited to: Trucking, Chain Link Fencing, Traffic Control, SWPPP, QC Manager, Qualified Biologist, Surveying, Noise Pollution Monitoring, Landscape Maintenance Subcontractor, Equipment Rental, Erosion Control Materials, Irrigation Materials, Seed and Plant Supplier, Orange ESA Fencing, Hydroseeding.

Jeffrey Perez j.perez@hanfordarc.com (707) 508-5585 and David Leyva d.leyva@hanfordarc.com

(707) 782-3454 are the estimators working on this project. Contact them with any questions regarding the scope of work, interpretation of plans or specifications, or if you need assistance in obtaining bonding, lines of credit or insurance. Prevailing wages and certified payroll reports are required. You must be registered with the Dept. of Industrial Relations. Please submit a copy of your current DIR certification, a current copy of your contractor's license (if applicable) and a current copy of your SBE certification with your quote. Please send all quotes by end of business July 7, 2026.

Plans and specs can be downloaded for free at SCVWD PlanetBids portal <https://vendors.planetbids.com/portal/48397/bo/bo-detail/141947> or at local builder's exchanges. You can also send an e-mail to our estimating dept. (estimating@hanfordarc.com) for an e-mailed copy of the plans and specs.

Subcontractors of every tier will be required to be bound by SCVWD's Project Labor Agreement (PLA)

HANFORD APPLIED RESTORATION & CONSERVATION IS AN EQUAL OPPORTUNITY EMPLOYER

NOTICE OF INVITATION TO BID

Los Angeles Neighborhood Initiative (LANI), a non-profit organization, is soliciting competitive bids for the federally funded **Grape Street Elementary School Signage Project in the community of Watts**. The selected firm will be responsible for designing school signage, and placemaking improvements, such as crosswalks, speed limit signs and other traffic calming measures. The SOW also includes engagement with a trauma-informed expert to guide the design.

This federally funded project is funded through the Community Development Block Grant program administered through the Community Investment in Families Department (CFID) of the City of Los Angeles. Federal and State Prevailing Wages provisions of the Davis Bacon and related federal acts and California Labor Code are applicable to the contract for this project. Section 3 and Build America, Buy America apply.

Bid documents are available on RAMPLA.org on June 01, 2026. There is no charge for the bid package. Questions can be directed via email only to Arturo Nevarez at arturo@lani.org. Deadline for written questions is June 23rd at 5:00PM.

All sealed bids must be received at the LANI office no later than **July 31st at 2:00PM**. Bid opening will be held on **July 31st at 2:01 PM at 800 S Figueroa, Suite 670, Los Angeles, CA 90017**.

LANI, with the concurrence of the City, reserves the right to reject any or all such bids and to waive any informality in the bid.



Mountain Cascade Inc.
555 Exchange Court, Livermore, CA 94550
(925) 373-8370, Fax (925) 373-0940

Project: Colorado River Aqueduct Pumping Plants Sump Rehabilitation
Owner: Metropolitan Water District of Southern California

Bid Date: July 14th, @ 2:00 P.M.

Engineers Estimate: \$31,000,000 - \$40,000,000

Project Duration: 580 WD's

***** THIS IS AN ELECTRONIC BID – PLEASE HAVE QUOTES TO MCI BY 12PM ON BID DAY *****

We are requesting quotes from all qualified (SBE/DVBE) Subcontractors and Suppliers but not limited to:

PIPE SUPPLIERS, CONCRETE STRUCTURES, ELECTRICAL-BUILDING, REINFORCING STEEL, FRP GRATING, CRANE RENTAL, MISC METALS, PAINTING/COATINGS.

Project Description:

The scope of work includes but is not limited to; replacement of concrete, structural supports, platforms, grating, handrails, sump covers, pumps, motors, valves, pipes, lighting, and ventilation; installation of Metropolitan-furnished equipment; removal of mud and debris from the sumps; electrical upgrades; hazardous materials abatement; and other appurtenant work as specified and shown on the drawings.

Project information, including plans & specifications can be found by contacting:

estimating@mountaincascade.com

or

<https://pssystem.planetbids.com/portal/16151/bo/bo-search>

Please feel free to contact Mountain Cascade, Inc. at 925.373.8370 with any questions concerning bonding, insurance, lines of credit, and job overview. We look forward to your response.

Mountain Cascade Inc. is an Equal Opportunity Employer California
California License # 422496

This is Part of a Good Faith Outreach. Your response is greatly appreciated.



Mountain Cascade Inc.
555 Exchange Court, Livermore, CA 94550
(925) 373-8370, Fax (925) 373-0940

Project: 8-Inch Ductile Iron Water Main Replacement
Contract No. WD-2885

Owner: City & County of San Francisco

Bid Date: July 2nd, 2026 @ 2:00 P.M.

Engineers Estimate: \$12,100,000

Project Duration: 585 CD's

******Please note this is an electronic bid, to ensure your quote has been received and reviewed please have all quotes to MCI by 12pm******

We are requesting quotes from all qualified SFPUC-LBE & DBE/SBE/MBE/WBE Subcontractors and Suppliers but not limited to:

AGGREGATES, ASPHALT, CONCRETE MATERIAL, LOW DENSITY CELLULAR GROUT, PIPE SUPPLIERS, PRECAST MATERIALS, EROS MATERIALS, AC OILS, ADJUST MH/WV, ASPHALT GRINDING, ASPHALT PAVING/ASPHALT STAMPED, BYPASS PUMPING, CATHODIC PROTECTION, CCTV, CONCRETE FLATWORK, CONCRETE PAVEMENT, CONCRETE STRUCTURES, CONSTRUCTION AREA SIGNS, DEWATERING & WELL POINTS, EROSION CONTROL, PIPE LINING (CEMENT MORTAR), MANHOLE REHAB, REINFORCING STEEL, SAWCUTTING, SOIL REMEDIATION, STRIPING, SURVEYING & MONUMENT REFERENCING, TRAFFIC CONTROL, TREE REMOVAL/ARBORIST, VIBRATION MONITORING, DUCTILE IRON PIPE & FITTINGS, TRUCKING, PIPELINE REHAB & HDPE SLIPLINING, HAZMAT, VALVES/WATER MAIN/TEMP FACILITIES, CURED-IN-PLACE PIPE LINING

Project Description:

The scope of work includes but is not limited to; replace approximately 2.15 miles of 8-inch ductile iron water mains, upgrade sewer lines and complete paving renovation on Fulton Street from Great Highway to 31st Avenue and various locations.

Project information, including plans & specifications can be found by contacting:

estimating@mountaincascade.com

or

<https://webapps.sfpuc.org/bids/>

Please feel free to contact Mountain Cascade, Inc. at 925.373.8370 with any questions concerning bonding, insurance, lines of credit, and job overview. We look forward to your response.

Mountain Cascade Inc. is an Equal Opportunity Employer California
California License # 422496

This is Part of a Good Faith Outreach. Your response is greatly appreciated.



Mountain Cascade Inc.
555 Exchange Court, Livermore, CA 94550
(925) 373-8370, Fax (925) 373-0940

**Project: CONSTRUCTION ON STATE HIGHWAY IN CALAVERAS COUNTY
AT MURPHYS FROM PENNSYLVANIA GULCH ROAD TO MAIN STREET**
Contract No. 10-1Q3804

Owner: Caltrans

Bid Date: July 14th, 2026 @2:00 PM ELECTRONIC BID

DVBE Goal: 3%

SBE Goal: 5%

We are requesting quotes from all qualified DBE Subcontractors and Suppliers but not limited to:

AGGREGATES, ASPHALT, PRECAST MATERIALS, AC OILS, ADJUST MH/ WV, CONCRETE FLATWORK, CONCRETE PAVEMENT, CONCRETE STRUCTURES, CONSTRUCTION AREA SIGNS, ELECTRICAL- STREET LIGHTS/ TRAFFIC SIGNALS/ LOOPS, EROSION CONTROL, REINFORCED CONCRETE PIPE, LANDSCAPING/ IRRIGATION, REINFORCING STEEL, SAWCUTTING, STRIPING, SURVEYING, SWPP PLAN ONLY, TRAFFIC CONTROL, TRUCKING, ROAD SIGN/ SIGNAGE.

Project Description:

The project includes, but not limited to, Cold plane, HMA, sidewalk, curb ramp, landscape, and drainage work.

Engineers Estimate: \$1,390,000

Plans and specs can be obtained at :<http://ppmoe.dot.ca.gov/des/oe/weekly-ads>

Or contact: estimating@mountaincascade.com

Subcontractors must possess a current contractor's license, DIR number, insurance and worker's compensation coverage. Subcontractors will be required to enter into our standard contract.

Mountain Cascade, Inc. is a Union Contractors and is signatory to Operating Engineers/Carpenters/Laborers/ Teamsters.

Please feel free to contact Mountain Cascade, Inc. at 925.373.8370 with any questions concerning bonding, insurance, lines of credit, and job overview. We look forward to your response.

Mountain Cascade Inc. is an Equal Opportunity Employer California
California License # 422496

This is Part of a Good Faith Outreach. Your response is greatly appreciated.

SBE OUTREACH SERVICES

With 1.5 million businesses in our database, SBE is California's #1 source for diversity outreach.

Advertisements - Placed in the Small Business Exchange newspaper, SBE Today newsletter, and online at www.sbeinc.com

Faxed and Eblast Solicitations - Targeted mailings sent to businesses per your criteria.

Telemarketing - Telephone follow-up calls that follow a script of 5 questions you create.

Computer Generated Reports - Will fit right into your proposal, along with a list of interested firms to contact.

Contact Info:

1160 Battery Street East, Suites #100, San Francisco, CA 94111

Email: sbe@sbeinc.com • Website: www.sbeinc.com

Phone: (415) 778-6250, (800) 800-8534

Fax: (415) 778-6255

Publisher of Small Business Exchange weekly newspaper

CALIFORNIA SUB-BID REQUEST ADS

W.A. Rasic Energy and Infrastructure Services, Inc. is preparing a bid for the following project as a prime contractor and we are interested in receiving subcontractor quotations for items of work or materials required below from interested Disadvantaged Business Enterprise (DBE), Minority Business Enterprise (MBE), Women Business Enterprise (WBE) and Other Business Enterprise (OBE).

**Los Angeles Department of Water & Power
Western Trunk Line – Phase 1
Bid No. 7972R1
Bid Date: July 30, 2026 @ 2:00 PM
Outreach: DBE/ MBE/WBE/OBE
Senior Estimator: Ben Sebat (562) 928-6111
Email: bsebat@warasic.com**

W.A. Rasic Energy and Infrastructure Services is requesting bids for the following trades and/or material supplies:

Asphalt Cold Milling & Cap Paving, Traffic Signals, Sawcutting, Striping, Welding, Furnish Welded Steel Pipe, Furnish Earthquake Resistant Ductile Iron Pipe, Waterworks Supply, Furnish Aggregate Supply, Furnish Ready Mix Supply, Furnish Fiber Optic Conduit & Pull Box Supply, Trenchless Construction, Cathodic Protection, Trucking & Disposal, Welding Inspection, Survey, Cathodic Protection, Shoring, Equipment Rental

NAICS Codes:

212321, 237310, 237990, 238190, 238210, 238990, 327320, 331210, 332996, 484110, 532412, 541370, 541690

Plans & Specifications are available to review Monday through Friday 8:00 am to 5:00 pm at no cost at our office located at 4150 Long Beach Blvd, Long Beach, Ca 90807.

W.A. Rasic Energy and Infrastructure Services, Inc. intends to seriously negotiate with qualified firms and will assist in obtaining bonds, lines of credit, insurance, equipment, supplies and materials upon request. W.A. Rasic Energy and Infrastructure Services, Inc. will consider all DBE, MBE, WBE and OBE quotes, including those that are broken down into economically feasible tasks or quantities as well as arrange delivery schedules to facilitate and encourage maximum bidding participation. W.A. Rasic Energy and Infrastructure Services, Inc. also encourages a consortium of DBE / MBE / WBE / OBE firms when a contract portion is too large to handle individually. Subcontractors must have a valid California Contractors License and must be registered with the Department of Industrial Relations (DIR) as required by Section 1725.5 of the Public Contract Code. Subcontractors will be required to execute W.A. Rasic Energy and Infrastructure Services, Inc.'s standard subcontract agreement and general insurance requirements. A copy of our subcontract agreement and insurance requirements is available in electronic format upon request. W.A. Rasic Energy and Infrastructure Services reserves the right to require each subcontractor to provide payment and performance bonds in the amount of 100% of the subcontractor's bid. Bond Premium will be reimbursed up to a cost not to exceed 1.5%. W.A. Rasic Energy and Infrastructure Services is an equal opportunity employer and Union signatory Contractor.



REQUEST FOR QUOTES FROM SUBS AND SUPPLIERS FOR:

Placer County Water Agency, Ophir Water Treatment Plant - Contract 2025-02

REVISED BID DATE: June 30, 2026 at 2 PM

Quotes must be received no later than Noon on 6/26/26 for evaluation

We are soliciting quotes for the following Divisions 01 thru 16 and items of work including, but not limited to: Clear & Grub, Erosion Control, Landscaping & Irrigation, AC Paving, Rebar, Erect Steel Structures, Electrical, Masonry, Ready Mix, Concrete Pumping, SWWP Plan, Underground Precast, Quality Control Testing, Dust & Air Pollution Control, Excavation and Fill for Structures, Trenching & Backfilling, Asphalt Paving, Concrete Paving, Concrete Sidewalk, Curb & Gutter, Segmental Block Retaining Walls, Manhole and Vault Covers and Accessories, Concrete Culverts, PVC Sewer Pipe, PVC Pressure Pipe, Fab Steel, Cleaning & Disinfection of Water Pipelines, Sewer Pipe Installation and Testing, Chain Link Fencing, Seeding and Sodding, Ready Mix Supply, Masonry, Cast Stone, Steel Joist Framing, Steel Decking, Misc. Metal Fabrications, Metal Railings, Metal Gratings, Anchorage in Concrete & Masonry, Structural & Misc. Metals, Rough Carpentry, Finish Carpentry and Architectural Woodwork, Fiberglass Reinforced Railings, Fiberglass Reinforced Gratings, Glass Fiberglass Reinforced Structural Members, Damp proofing, Masonry Water Repellent Coating, Thermal Insulation, Formed Metal Wall Panels, Equipment Installation, Horizontal End Suction Centrifugal Pumps, Raw Water Vertical Turbine Pumps, Treated Water Pump Station Vertical Turbine Pumps, Submersible Pumps, Motor Driven Double Disc Pumps, Submersible Sump & Sewage Pumps, Sample Pumps, Circular Gravity Thickener Equipment, Package Plate Settler Treatment Unit, Ballasted Flocculation (Actiflo®) System Equipment, Ballasted Flocculation (Actiflo®) System Mixing System, Ballasted Flocculation (Actiflo®) System Reinforced Plastic Fabrications, Microsand/Residual Pumps, Ballasted Flocculation (Actiflo®) System Sludge Scraper Equipment, Multistage Centrifugal Blowers, Compressed Air Equipment – Blower Room, Compressed Air Equipment – TWPS Surge System, Dry Polymer Feed System, Liquid Chemical Feed Systems. Metal Building Systems, Fiberglass Reinforced Plastic Chemical Storage Tanks, Steel Chemical Storage Tanks, Chemical Storage Tank Installation, Wrapped Prestressed Concrete Tank, Reservoir Baffling System, Filter Underdrains & Media, Instrumentation and Control System, Instrument List, IO List, Programmable Logic Controllers, Software Control Block Descriptions, Panel Mounted Instruments, Flow Instruments, Pressure and Level Instruments, Process Analytical Instruments, Temperature Instruments, Miscellaneous Instruments, Panels, Consoles and Appurtenances Process Control Network Systems, Metallic and Fiber Optic Communication Cables and Connectors, Tightness Testing of Structures, Surge Control System, Standing Seam Metal Roofing, Single-Ply Roofing, Fully Adhered, Sheet Metal, Roof Specialties and Accessories, Firestopping, Joint Sealants, Steel Doors and Frames, Fiberglass Reinforced Plastic Doors and Frames, Wood Doors, Overhead Coiling Aluminum Doors, Aluminum Entrances and Assemblies, Finish Hardware, Glass and Glazing, Gypsum Wallboard, Ceramic Tile, Suspended Acoustical Ceilings, Acoustical Treatment, Corrosion Protection Systems, Architectural Painting, Protective Coatings, Louvers and Vents, Identifying Devices, Metal Lockers, Toilet Accessories, Miscellaneous Specialties, Fire Suppression Sprinkler Systems, Bridge Cranes, Valve Installation, Misc. Piping and Pipe Accessories Installation, Basic Mechanical Building Systems Materials and Methods, Misc. Piping and Pipe Accessories, Ductile Iron Pipe, Steel Pipe, Stainless Steel Pipe and Alloy Pipe Tubing & Accessories, Misc. Steel Pipe Tubing & Accessories, Misc. Plastic Pipe, Tubing and Accessories, Cast Iron Soil Pipe and Accessories, Copper Tubing & Accessories, Misc. Ball Valves, Industrial Butterfly Valves, Industrial Butterfly Valves Schedule, Check Valves, Check Valves Schedule, Backflow Preventers, Solenoid Valves, Globe Valves, Pinch and Diaphragm Valves, Plug Valves, Pressure Reducing Valves, Plug Valves, Pressure Reducing Valves, Misc. Valves, AWWA Butterfly Valves, Eccentric Plug Valves, Resilient-Seated Gate Valves, Air Valves, Pipe Supports, Valve and Gate Actuators, Mechanical Insulation, Plumbing, Seal Water Stations, Heating Systems Equipment, Refrigeration Systems, Building Systems Controls, Testing, Adjusting and Balancing, Electrical, Electrical Equipment Installation, Variable Frequency Drive, Medium Voltage Variable Frequency, Common Motor Requirements for Process Equipment, Pad Mounted, Liquid Filled, Medium Voltage Transformers, Variable Frequency, Switchboards, 600 Volt Class Motor Control Centers, Bypass-Isolation Automatic Transfer Switch, Lighting Protection for Structures, Fire Protection and Signaling System, Security General Requirements, Security Conductors and Cables, Structured Cabling System, Video Surveillance System, Electronic Access Control System (EACS), Testing and Commissioning, Class 2 Agg Base.

CARB Certification will be required from listed subcontractors, or a formal explanation letter for why your firm does not have it.

100% performance and payment bonds will be required for the full amount of the subcontract price. Please contact us for any assistance to this solicitation, including obtaining bonding, insurance, equipment, materials and/or supplies. Provide subcontractor and supplier scopes/quotes as early as possible to enable estimators to perform a thorough evaluation of all scopes/quotes received. Quotes will be broken down into comparable packages as reasonably necessary to facilitate participation. Quotes must be valid for the same duration as specified by the Owner for Contract Award. We are signatory to Operators, Laborers, Cement Masons, Carpenters & Pile Drivers Unions. Non-signatory subs will be required to sign an agreement for trades covered under our union agreements. We intend to work cooperatively with subcontractors/suppliers for all bid items you are licensed and qualified to perform. Bid items can be split to facilitate participation from all certified firms. We will reimburse for bond premium up to 2%. **Firms must possess & provide current contractor's license number & DIR Registration number on the quote.** Firms must possess insurance and workers compensation coverage meeting project requirements. Waiver of Subrogation is required. Please contact us for any assistance required by your firm. Subcontractors will be required to execute our standard subcontract agreement and agree to the standard general terms & conditions. Please contact us by email if you would like copies for review prior to bid day.

Contract Documents and related project information, including future Addenda, are available and can be downloaded for FREE from our Box ftp site by email request. Please send the email request to NORCALBIDS@flatironcorp.com for access to plans & specs on our BOX ftp site. If you would like to speak to an estimator for a specific scope or work, please email us and we can schedule a virtual or in person appointment to review project docs.

Please email ALL Scopes/Quotes to: NORCALBIDS@flatironcorp.com

**Flatiron Dragados Constructors, Inc.
1200 Concord Avenue, Suite 465 Concord, CA 94520
Phone 707-742-6000 Fax 707-746-1603
Equal Opportunity Employer
License No. 1134655**



REQUEST FOR SUBCONTRACTORS/SUPPLIERS/SERVICE PROVIDERS

SBE and DVBE Participation Encouraged

Caltrans Contract 02-2K0004

FOR CONSTRUCTION ON STATE IN SHASTA COUNTY NEAR SHASTA FROM 0.4 MILE WEST OF WHISKEY CREEK ROAD TO 0.1 MILE EAST OF LAKE VISTA OVERLOOK. BRIDGE REPLACEMENT AND ROAD WIDENING. In District 02 On Route 299 (Bridge Replacement and Road Widening)

Bid Date: July 23, 2026 at 2:00 PM

Engineer's Estimate: \$87,000,000

****This is an Electronic bid submittal****

****Scopes/Quotes not received by 11:00 AM on July 21st may not be reviewed/evaluated****

Flatiron Dragados Constructors, Inc. (FDCI) requests subcontractor/supplier/service participation for the following Items of work, but not limited to: CAS/ Roadway Signs, Bridge Demo, Clear & Grub, AC Paving, AC Dike, Tack Coat, Cold Plane AC, Jt. Seal Assembly, Rebar, Erect Steel Structures, Underground Utilities, Misc. Metal Railing Types, MBGR, Roadway & Concrete Barrier, Striping, Electrical, Clean Treat Deck, Class 2 Ag Base, Aggregates, Ready Mix, Concrete Pumping, Furn. Structural Steel/Bridge, Welded Steel Pipe, Misc. Iron & Steel, Misc. Metal, Clean & Paint Structural Steel, Trucking, PTFE Bearings, Street Sweeping, Traffic Control, Treated Wood Waste, Bird Exclusion Devices.

Caltrans Spec Section 2-1.11 IN-USE OFF-ROAD DIESEL-FUELED VEHICLE LIST CARB Certs required from listed Subs.

100% performance/payment bonds will be required for the full amount of the subcontract price. Please contact FDCI for any assistance to this solicitation, including obtaining bonding, insurance, equipment, materials and/or supplies. Provide subcontractor/supplier scopes/quotes as early as possible to enable estimators to perform a thorough evaluation of all quotes received. Quotes will be broken into comparable packages as reasonably necessary to facilitate participation. Quotes must be valid for the same duration as specified by the Owner for Contract Award. We are signatory to Operating Engineers, Laborers, Cement Masons, Carpenters and Pile Drivers Unions. Non-signatory subs will be required to sign an agreement for trades covered under our union agreements. Flatiron intends to work cooperatively with subcontractors and suppliers for all bid items you are licensed and qualified to perform. Bid items can be split to facilitate participation from all firms. FDCI will reimburse for bond premium up to 2%. **Firms must possess & provide current contractor's license number & DIR Registration number on the quote.** Firms must possess insurance and workers compensation coverage meeting project requirements. Waiver of Subrogation is required. Please contact FDCI for any assistance required by your firm. Subcontractors/Suppliers will be required to execute our standard agreements and agree to the standard general terms & conditions. Copies are available for review on our Box.com ftp site upon email request.

To view and download projects docs for FREE from the Caltrans website you will need to "Create an Account" with Caltrans Bidding Connect. Use the following link: https://ppmo.dot.ca.gov/cc?id=cc_advertisement×pan=all&contract=02-2K0004 DES-PPM&OE - Advertised Projects (ca.gov) select Advertised Projects page and enter the Contract number: **02-2K0004**. Sign in is required to access project plans.

To access **FREE** project documents from our Flatiron BOX ftp site, please send an email request to NorCalBids@FDcorp.com. You will be provided with a BOX link to view & download plans and specs for **FREE** from our BOX.com ftp site. Please send an email if you would like to schedule an appointment to review project documents or meet with an estimator in our office. These services are offered by appointment only.

Please email ALL Scopes/Quotes to: NORCALBIDS@flatironcorp.com

**Flatiron Dragados Constructors, Inc.
1200 Concord Avenue, Suite 465 Concord, CA 94520
Phone 707-742-6000 Fax 707-746-1603
Equal Opportunity Employer
License No. 1134655**



**Owner: City of Los Angeles Department of Water and Power
Project Name: Western Trunk Line Phase 1, IFB No. 7972R1
Bid Date: July 30, 2026, at 2:00p.m.**

Request for DBE, MBE, WBE, OBE sub-quotes

Kiewit Infrastructure West Co. (Kiewit) is seeking sub-quotes from qualified, Disadvantaged Business Enterprises (DBE), including Minority Business Enterprise (MBE), Women Business Enterprise (WBE), Other Business Enterprise (OBE) firms; and all other business enterprises to perform as Subcontractors and Material Vendors/Suppliers. DBEs must be certified by one of the following agencies prior to bid opening: Minority Business Development Agency (MBDA), Small Business Administration (SBA), California Unified Certification Program (CUCP), California Public Utilities Commission (CPUC), Tribal, State and Local governments, or an independent certifying organization.

Kiewit is requesting quotes for various areas of work listed in, but not limited to, the scopes of work below:

Archaeology, land surveying quality control, dumpster and trash services, site security, traffic control/MOT, aggregate, trucking and hauling, water trucks operated, subsurface investigation, material landfill for dirt, dewatering, shoring and underpinning, soil stabilization, SWPPP, street sweeping, tunneling and boring, soil nail wall, micro tunneling, utilities cathodic protection, CCTV inspection, reinforced concrete pipe, plastic pipe, cast iron sewer, steel casing, manhole material, asphalt paving, asphalt supply, rigid placement, curbs and gutter, ready mix supply, concrete forms, concrete reinforcing installation, concrete pumping, precast concrete, concrete drilling and saw-cutting, metals, joint sealer, painting and coating, cathodic protection, measurement and control instrumentation, bolts and gaskets, pipes and tubes, valves and electrical work.

Firms interested in providing a sub-quote for this project must contact Kiewit and responding firms will be issued an "Invitation to Bid" through Kiewit's electronic use of Building Connected system (at no cost to bidder) with project information and bid instructions. *Plans and specifications are also available for review at Kiewit's office located at 10704 Shoemaker Avenue, Santa Fe Springs, CA 90670.*

Responsive bidders must possess a valid California Contractor's license (as appropriate) and provide acceptable insurance. Responsible subcontractors and material contractors will be required to provide bonding for 100% of their contract value. Kiewit will reimburse bond premiums. Kiewit is signatory to collective bargaining agreements with carpenters, laborers, cement masons, ironworkers, operating engineers and teamsters. Kiewit will consider quotes from any, and all bidders who demonstrate an ability to foster and maintain labor harmony on the Project.

Kiewit intends to conduct itself in good faith with all participants on this project. For further information regarding this project, licensing, insurance, bonding, related assistance with equipment, supplies, and materials, or the project schedule, please contact our Lead Estimator.

**Kiewit Infrastructure West Co.
10704 Shoemaker Ave., Santa Fe Springs, CA 90670
Tel: (562) 946-1816 • Fax: (562) 946-3823
Lead Estimator Contact : Kyle Nelius
Email: kyle.nelius@kiewit.com**

"Kiewit Infrastructure West Co. is an Equal Opportunity Employer.

How to write a construction daily report that keeps your project on track

Continued from page 1

Attorneys and arbitrators rely on them in disputes as one of the main sources of information when disputes arise.

Construction daily reports are created the same day events occur, so they carry more weight than after-the-fact recollections. The team with the clearest, most consistent records is usually the one best positioned to defend its version of events.

Why construction daily reports matter

Construction reports are the connective tissue between what happened in the field and what everyone else thinks happened. When they're done well, they do three things that keep your project moving.

1. They protect your schedule and budget

A daily report that tracks actual production against planned production gives you early warning when you're falling behind.

If your tile crew normally installs 200 SF per day but has averaged 80 SF per day over the last week due to trade conflicts, that trend is visible in the reports before it becomes an unrecoverable schedule hit.

Historical daily report data can also improve future estimates for labor, materials, and phase completion. Without reliable reports, you're guessing and repeating the same estimation errors on every bid.

2. They keep the field and office working from the same set of facts

When the field and office are working from different versions of reality, decisions get made on bad information.

A daily report that's accurate, specific, and submitted the same day keeps everyone aligned. The PM in the trailer sees the same delays the foreman saw on the third floor. The project executive reviewing progress across five jobsites gets a real picture across the board.

3. They create a defensible record for disputes and claims

Daily reports are among the most practical ways to document delays or changes in conditions on the jobsite. When details fade, or accounts diverge, reports written the same day carry more weight than recollections assembled weeks or months later.

If you're relying on daily reports for contractual notice, review the specific language in your contract and ensure the report includes any required follow-up notice.

How to write a construction daily report that keeps your project on track

The difference between a report that protects you and one that doesn't comes down to specificity, timing, and consistency.

1. Make sure reports are written on the jobsite, not reconstructed later

The report should be written while work is happening, not from memory after the fact. Whether you're the one filling it out or you're managing the person who is, the standard is the same: document the day in real time, on the jobsite.

Reports not created until the end of the week or month won't be as accurate or as useful as those written the same day. In a dispute, the timing and completeness of a report may affect credibility. Building the report throughout the day also eliminates the scramble at 4:30 PM when your team is tired and trying to piece together what happened at 7 AM.

Fieldwire's custom forms (Business and above) are built for this workflow. A superintendent fills out structured fields on their phone throughout the day — weather is auto-generated, so they're not stopping to look it up — and submits the completed report before leaving the site.

2. Record labor, equipment, and materials with names and quantities

Vague entries are useless, and the report on every work task should answer four questions: what was performed, who performed it, with what equipment or materials, and how long it took.

Compare these two entries:

- Bad: "Poured concrete."
- Good: "Poured 35 cubic yards of 4,000 PSI concrete for the eastern retaining wall foundation. Pour completed between 10:00 AM and 1:30 PM by a crew of four from ABC Concrete."

The first tells you almost nothing. The second gives you a clear factual record of what happened.

For equipment, track three things: the type, whether it was in use, idle, or out of order, and the hours it ran that day. Idle and broken equipment still costs money, and documenting all three states prevents the common error of only tracking what's actively working.

For material deliveries, log the item, quantity, supplier, and submittal number. Including the submittal number shows you're actually verifying the material against approved submittals, not just noting that a truck showed up.

3. Document weather conditions and how they affected work

Record the weather every day, including good days. Writing "Clear skies, 65°F, no weather impacts to scheduled work" on normal days establishes the baseline that makes adverse weather claims more credible later. If you only document the weather on rainy days, it looks selective.

When the weather does affect work, document the specific impact: how many crew-hours were lost, which trades were affected, and whether the delay will carry into the next day.

4. Log every delay or disruption, including cause, impact, and duration

A delay is documented on Day 1 and then never mentioned again on Days 2 through 15. When the claim is reviewed, it can appear to be a one-day issue rather than a two-week problem.

The fix is simple: if the same condition is still affecting work, keep documenting it. For each delay, capture the cause, the impact on production, and how long it lasted.

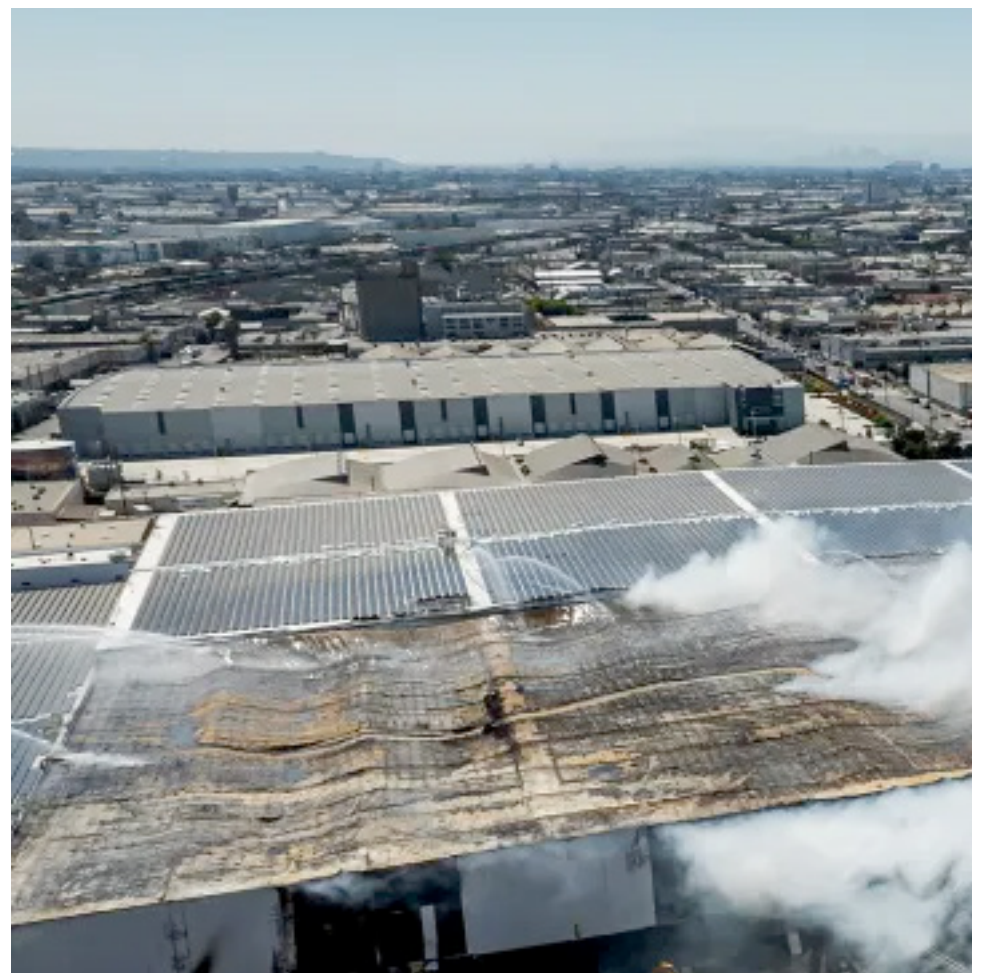
Visit the link below for the full article:

<https://www.fieldwire.com/blog/construction-daily-report/>

Warehouses are exposing more Californians to costly, toxic disasters



Firefighters battle a blaze at a cold storage facility in the Boyle Heights neighborhood of Los Angeles on June 22, 2026. Authorities declared a state of emergency as the fire intensified, prompting evacuations in the surrounding area. The fire started on June 17, 2026. Photo by Ted Soqui for CalMatters



An aerial view of the smoldering storage facility in the Boyle Heights neighborhood of Los Angeles on June 22, 2026. Authorities declared a state of emergency as the fire intensified, prompting evacuations in the surrounding area. The fire started on June 17, 2026. Photo by Ted Soqui for CalMatters

Continued from page 1

Community members and residents city-wide impacted by toxic air from layers of insulated foam and plastics — and millions of pounds of burning or rotting frozen food — deserve to know who is responsible. It's also important to understand how global capital underwrites local harm.

Monumental buildings have monumental consequences. Frontline community members have known that for years. Now we are all getting a taste of it.

SOURCE:

<https://calmatters.org/commentary/2026/06/warehouses-fires-california-community-risk/>



EVENTS



Virtual Event

Legal Committee Presents:

Working in PLA and Unionized Construction Environment



TUESDAY
July 21, 2026
12:00pm - 1:00pm

\$55 - CMAA MEMBERS
\$85 - NON-MEMBERS

SPONSORSHIPS AVAILABLE

PROGRAM

Many construction sites have a mix of union and non-union contractors. On jobs covered by project labor agreements (PLAs), contractors may be required to operate under terms of union agreements. In other scenarios without PLAs contractors may either have union agreements or work with other contractors where union agreements come into play. If you work in these environments you need to know the labor landscape. This session will help you understand and identify terms and concepts affecting the work you perform so that you are better able to ask the right questions and avoid unforeseen problems buried in the terms of a labor agreement.



EMCEE

Anthony P. Niccoli
Partner
AALRR



SPEAKER

Thomas Lenz
Partner
AALRR

REGISTER

CMAA SoCal Chapter | www.cmaasc.org/events



2ND ANNUAL



POKER NIGHT



FUN-RAISER

Thursday, August 6, 2026
The Grand Long Beach

Poker & Wildcard Tables | Prizes | Special Guest Poker Pro |
Owner Attendees | Doors Open at 6 PM

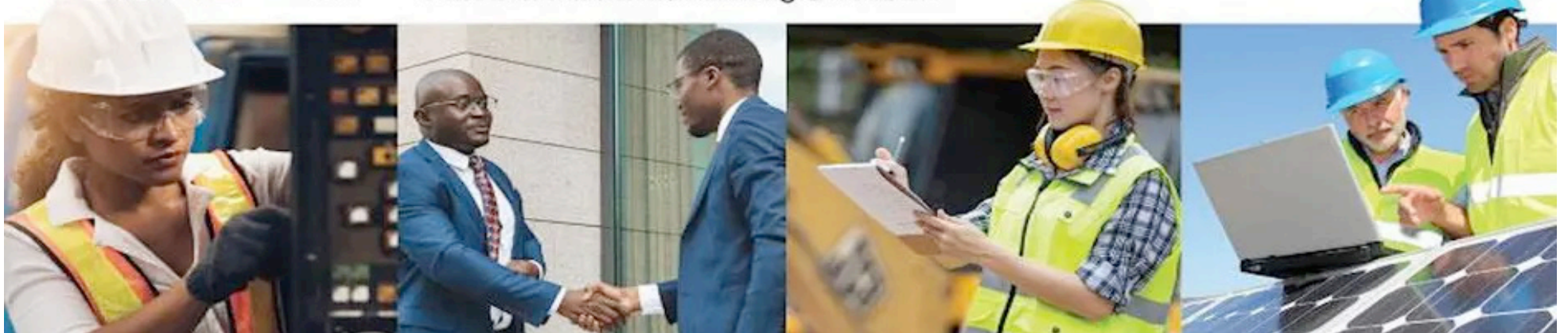
Join the fun! For more information on registration and sponsorship opportunities visit <https://cmaascfndn.org/Events/>

San Diego's favorite procurement event for construction contractors, architects, engineers, and related vendors, suppliers, and manufacturers!



SAN DIEGO UNIFIED SCHOOL DISTRICT'S ANNUAL CONSTRUCTION EXPO!

Wednesday, July 15, 2026
9 am to 1 pm • University City High School
6949 Genesee Ave., San Diego, CA 92122





CALIFORNIA SUB-BID REQUEST ADS



Mountain Cascade Inc.
555 Exchange Court, Livermore, CA 94550
(925) 373-8370, Fax (925) 373-0940

Project: Wastewater Collection System Improvement Project
CWSRF Project No.: C-06-8225-210
Owner: City of Williams
Bid Date: August 6th, 2026 @ 2:00 P.M.
Engineers Estimate: \$3.7 - \$4.1 Million
Project Duration: 365 cd's

We are requesting quotes from all qualified (DBE) Subcontractors and Suppliers but not limited to:

AGGREGATES, ASPHALT, CONCRETE MATERIAL, SLURRY, LOW DENSITY CELLULAR GROUT, PIPE SUPPLIERS, PRECAST MATERIALS, BYPASS PUMPING, CCTV, CONCRETE FLATWORK, ELECTRICAL- STREET LIGHTS/ TRAFFIC SIGNALS/ LOOPS, PIPE LINING (CEMENT MORTAR), PLASTIC PIPE, LANDSCAPING/IRRIGATION, MANHOLE REHAB, SAWCUTTING, STRIPING, SURVEYING, SWPPP, TRUCKING, PAINTING/COATINGS, PIPE INSULATION.

Project Description:

The Project consists of replacement of up to approximately 10,500 LF of 8-inch to 24-inch collection pipeline, replacement of laterals and installation of new two-way cleanouts within the right-of-way, replacement of manholes, and lining approximately 320 LF of existing 15-inch collection pipeline.

Project information, including plans & specifications can be found by contacting:

estimating@mountaincascade.com

Subcontractors must possess a current contractor's license, DIR number, insurance and worker's compensation coverage. Subcontractors will be required to enter into our standard contract.

Mountain Cascade, Inc. is a Union Contractors and is signatory to Operating Engineers/Carpenters/Laborers/ Teamsters.

Please feel free to contact Mountain Cascade, Inc. at 925.373.8370 with any questions concerning bonding, insurance, lines of credit, and job overview. We look forward to your response.

Mountain Cascade Inc. is an Equal Opportunity Employer California
California License # 422496

This is Part of a Good Faith Outreach. Your response is greatly appreciated.



Our firm, An Equal Opportunity Employer, is requesting quotations from all qualified Certified DBE, MBE, WBE, OBE sub-contractors and/or material suppliers to submit bids on the following project:

CITY OF LOS ANGELES
DEPARTMENT OF WATER AND POWER
Western Trunk Line Project – Phase 1
(Project No. 7972R1)

Business Enterprise Goal & Fair Share DBE, MBE, WBE, OBE Participation

Bid Date: July 30, 2026 @ 2:00 P.M.

Email: bid@rados.com

Sub-Trades Suppliers Needed For The Following Work (but not limited to):

Sand & Gravel Supplier, Base, Rock, Pipe Supplier, Traffic Control System, Asphalt Concrete Paving, Soil Stabilization/Ground Treatment, Precast Concrete, Reinforcing Steel, Structural Steel Misc-Metal, Painting/Coatings, Welding Contractor, Pavement Marking & Striping, Inspection Services, Materials Testing Services, Land Surveyor, Super 10 Dump Truck, Water Truck, Street Sweeping Truck, Asphalt Supplier, Concrete Curb/Gutter/Sidewalk/Ramp, Saw Cutting, Electrical And Instrumentation, SWPPP Planning, Shoring Construction, Microtunnel, Dewatering, Cathodic Protection, Security, Potholing, Settlement/Vibration Monitoring.

NAICS:

212319, 212321, 237110, 237310, 237990, 238110, 238120, 238210, 238190, 238320, 238910, 238990, 324121, 423510, 484220, 488490, 541330, 541370, 541380, 561612

S.P. Rados, Inc. is a Signatory Union Contractor. Subcontractors will be required to abide by the terms and conditions of the AGC Standard Long Form Subcontract incorporating prime contract terms and conditions, including payment provisions & insurance requirements. S.P. Rados, Inc.'s listing of a subcontractor is not to be construed as an acceptance of all the subcontractor's conditions or exceptions included with the Subcontractor's price quote. Subcontractors will be required to provide a payment & performance bond from an approved surety company for 100% of the subcontracted work. S.P. Rados, Inc. will pay bond premium up to 1.5% (optional).

Please be advised, Contractors and Subcontractors must register with the D.I.R. (Department of Industrial Relations) in order to bid on public works projects. Registration with the D.I.R. costs \$300 and covers the fiscal year (July 1 to June 30th). To verify status of your D.I.R. number, please visit: <http://dir.ca.gov/Public-Works/Contractors.html>.

Assistance is available in obtaining bonds, lines of credit and/or insurance. We will consider dividing total requirements when economically feasible into smaller tasks or quantities to permit participation by DBE, MBE, WBE, OBE in the competitive process. We will assist in obtaining necessary equipment, supplies, materials & related assistance or services. S.P. Rados, Inc. requires that Subcontractors and Suppliers price quotes be provided at a reasonable time prior to the bid deadline to enable a complete evaluation. If you are interested in participating in this project, please contact Lucy Gonzalez at Tel: (714) 835-4612 Fax: (714) 835-2186 or bid@rados.com.

Plans and Specifications and copies of the proposal are available free of charge <https://stevepradosinc.sharefile.com/d-s07343e51e9a5438a82ba7d03812b1326> also available for viewing at 2002 E. McFadden Ave., Ste. 200, Santa Ana, CA 92705 call our office to schedule a review of the plans and specifications (714) 835-4612.



Buhler Commercial
CSLB # 1003262
400 Brannan St., Ste. #204 • San Francisco, CA 94107
(415) 610-8650
An Equal Opportunity Employer

Buhler Commercial is preparing a bid as a Prime contractor for the following project:

Peralta Community College District:
Merritt College ADA and Site Improvements, Bid # 25-26/04
Small Local Business In All Alameda County Cities, El Cerrito, Hercules, Pinole, Richmond,
and San Pablo Enterprises Participation Goal
Bid Date: June 30th, 2026 3PM

Buhler Commercial is soliciting proposals/quotes from all qualified and certified Small Local Business in All Alameda County Cities, El Cerrito, Hercules, Pinole, Richmond, and San Pablo Enterprises (SBEs), for the scopes of work required for the subject project located at 12500 Campus Dr Oakland, CA 94619, including but not limited to:

- Facility upgrades throughout campus at College of Alameda
- College of Alameda 860 Atlantic Building Modernization
- Interior Demolition
- Interior Hazmat, Lead, and Asbestos Remediation/Disposal
- Existing Flooring Replacement
- Existing Ceiling Tiles Replacement
- New Drinking Fountains
- Upgrades to existing restrooms including but not limited to ceramic tile, paint, restroom accessories, toilet partitions, plumbing fixtures, lighting, and etc.
- Doors, Frames, and Door Hardware Upgrades
- Exit and Restroom Signage Upgrades
- Site Demolition, Sawcutting, Earthwork, and Grading
- Exterior Concrete Flatwork
- Exterior Asphalt Replacement
- Asphalt Striping and Signage Upgrades

Project is subject to a Project Labor Agreement (PLA) that all subcontractors must agree to in order to work on this project

Construction Schedule: Overall Duration: **365 Calendar Days**, Anticipated On Site Start Date: **December 2026**

Matthew Anderson (415) 610-8650; matthew.anderson@buhlercommercial.com is the estimator for this project and is available to aid or answer questions regarding the project scope of work, bid requirements, bonding and insurance requirements, or any other questions you may have. Buhler Commercial will provide any assistance it can in helping interested parties in obtaining bonds, lines of credit, and insurance required. All proposals/quotes should be emailed to the Estimator prior to 12:00 PM on the Bid Date. Buhler Commercial is willing to break out any portion of work to encourage SLBE participation. District's goal is to have a SLBE subcontractors to perform a minimum of 25% of total contract's cost. Buhler Commercial encourages SLBE's to submit pricing in order to not only meet this goal, but to exceed the percentage. All subcontractors are required to execute Buhler standard subcontract agreement and comply with all insurance requirements. Buhler Commercial requires subcontractors awarded on this project to provide Payment and Performance Bonds from a surety at the subcontractor's expense for any contract that exceeds \$300,000. Buhler Commercial is signatory to the Carpenters and Labors Union. This is a Prevailing wage project. This project is subject to a project labor agreement (PLA) that all contractors on the job must agree to in order to perform work. All subcontractors must be registered with the DIR. When submitting a bid proposal be sure to acknowledge the projects bid documents (Drawing, Specifications, Addenda, ETC). Project documents such as plans, specifications and addendums can be found at <https://login.onlineplanservice.com/detail?idwebDB=True&BidPackageID=1351505&HOMEPR=COPS&STATUS=BIDDING&DOCLOC=COPS26-01861&PUNIQ=26-01861>

Project documents can also be obtained by contacting Matthew Anderson at information provided above. Buhler Commercial will also send invites through Building Connected to interested subcontractors which will have all project documents listed on the Building Connected listing.



Buhler Commercial
CSLB # 1003262
400 Brannan St., Ste. #204 • San Francisco, CA 94107
(415) 610-8650
An Equal Opportunity Employer

Buhler Commercial is preparing a bid as a Prime contractor for the following project:

Peralta Community College District:
College of Alameda & COA 860 Atlantic ADA and Site Improvements, Bid # 25-26/11
Small Local Business In All Alameda County Cities, El Cerrito, Hercules, Pinole, Richmond, and San Pablo Enterprises Participation Goal
Bid Date: June 30th, 2026 3PM

Buhler Commercial is soliciting proposals/quotes from all qualified and certified Small Local Business in All Alameda County Cities, El Cerrito, Hercules, Pinole, Richmond, and San Pablo Enterprises (SBEs), for the scopes of work required for the subject project located at 555 Ralph Appenzato Memorial Pkwy Alameda, CA & 860 Atlantic Ave Alameda, CA 94501, including but not limited to:

- Facility upgrades throughout campus at College of Alameda
- College of Alameda 860 Atlantic Building Modernization
- Interior Demolition
- Interior Hazmat, Lead, and Asbestos Remediation/Disposal
- Existing Flooring Replacement
- Existing Ceiling Tiles Replacement
- New Drinking Fountains
- Upgrades to existing restrooms including but not limited to ceramic tile, paint, restroom accessories, toilet partitions, plumbing fixtures, lighting, and etc.
- Doors, Frames, and Door Hardware Upgrades
- Exit and Restroom Signage Upgrades
- Site Demolition, Sawcutting, Earthwork, and Grading
- Exterior Concrete Flatwork
- Exterior Asphalt Replacement
- Asphalt Striping and Signage Upgrades

Project is subject to a Project Labor Agreement (PLA) that all subcontractors must agree to in order to work on this project

Construction Schedule: Overall Duration: **365 Calendar Days**, Anticipated On Site Start Date: **December 2026**

Matthew Anderson (415) 610-8650; matthew.anderson@buhlercommercial.com is the estimator for this project and is available to aid or answer questions regarding the project scope of work, bid requirements, bonding and insurance requirements, or any other questions you may have. Buhler Commercial will provide any assistance it can in helping interested parties in obtaining bonds, lines of credit, and insurance required. All proposals/quotes should be emailed to the Estimator prior to 1:00 PM on the Bid Date. Buhler Commercial is willing to break out any portion of work to encourage SLBE participation. District's goal is to have a SLBE subcontractors to perform a minimum of 25% of total contract's cost. Buhler Commercial encourages SLBE's to submit pricing in order to not only meet this goal, but to exceed the percentage. All subcontractors are required to execute Buhler standard subcontract agreement and comply with all insurance requirements. Buhler Commercial requires subcontractors awarded on this project to provide Payment and Performance Bonds from a surety at the subcontractor's expense for any contract that exceeds \$300,000. Buhler Commercial is signatory to the Carpenters and Labors Union. This is a Prevailing wage project. This project is subject to a project labor agreement (PLA) that all contractors on the job must agree to in order to perform work. All subcontractors must be registered with the DIR. When submitting a bid proposal be sure to acknowledge the projects bid documents (Drawing, Specifications, Addenda, ETC). Project documents such as plans, specifications and addendums can be found at <https://login.onlineplanservice.com/detail?idwebDB=True&BidPackageID=1351555&HOMEPR=CO PS&STATUS=BIDDING&DOCLOC=COPS26-01867&PUNIQ=26-01867>

Project documents can also be obtained by contacting Matthew Anderson at information provided above. Buhler Commercial will also send invites through Building Connected to interested subcontractors which will have all project documents listed on the Building Connected listing.